



marine

2021

**HERTZ**  
The Sound Experience



**HERTZ**



Technology Art + Sound  
Manufactured by  
**elettromeia** Italy



# THE SOUNDTRACK OF YOUR ADVENTURES

marine

**HERTZ MARINE HIGH-PERFORMANCE CONTROL UNITS, SPEAKERS AND AMPLIFIERS ARE DESIGNED TO OPERATE IN THE MARINE ENVIRONMENT, THRILLING YOU WITH THE EMOTIONS OF MUSIC WHILE ENJOYING BOATING**

Since 1998, Hertz has developed in Italy world-class speakers, amplifiers and DSP for the 12 V industry, focused on reaching the best performance in the real environment of application. Passion for audio entertainment is the essential driving force leading the Hertz engineers to win the never-ending challenge of innovation using the most advanced technologies, always.

Hertz products, highly regarded in over 60 countries worldwide, received several awards from EISA and other leader organizations for its outstanding track record of unique products.

To support its fans and sea lovers, in 2014 Hertz launched the Marine program, bringing the "Hertz Sound Experience" to open water.

HERTZ PRODUCTS DESIGN ORIGINATES FROM THE UNIQUE **ITALIAN** MARINE LIFE-STYLE

The Conero Riviera, Marche,  
Italy - Just 10 miles away  
from Hertz Headquarters



# marine



# MAKE EVERY CRUISE MEMORABLE WITH HERTZ MARINE

## **MARINE GRADE SOURCE UNITS**

Engineered to maximize fun on board with an exclusive design, Hertz Marine control units are the ultimate solution for high fidelity on open water, thanks to extended connectivity and user-friendly Marine functions.

## **PREMIUM CLASS TOWERS**

Developed to deliver emotions during water sports sessions, Hertz Marine Towers will light up your parties overwhelming you with a detailed high-output sound and an exclusive color lighting experience, making your special events unique.

## **HIGH-PERFORMANCE SPEAKERS**

Hertz Marine speakers will thrill you with unlimited emotions, preserving their astonishing performance season after season. The ultra-complete range features a wide array of grilles, colors and sizes, to satisfy every installation need. Last but not least, Hertz Marine subwoofers will complete the low-end reproduction with outstanding output enhancing your cruising experience.

## **HIGH-POWER AMPLIFIERS**

Hertz Marine amplifiers are made to withstand the hard life on board, delivering premium audio quality even with the most demanding installation, thanks to built-in DSP and the unmatched power-to-size ratio.

# POWER FOR THE WAVES PURE MARINE CERTIFIED PRODUCT

**HERTZ MARINE PRODUCTS ARE READY TO SAIL AND DESIGNED TO LAST, BEING ENGINEERED BY A DEDICATED R&D TEAM USING IN-HOUSE DEVELOPED SOFTWARES AND ENDURANCE TESTED TO FACE THE HARDEST CONDITIONS THAT CAN BE FOUND IN OPEN WATER**





**WATER JET RESISTANT**

**WATER JET RESISTANT**

The protection grade IP64 for amplifiers, IP65 for speakers and IP66 for source units define all the Hertz Pure Marine Certified products as totally protected against water jets of different entities, making them highly performant in the marine environment.



**VIBRATION PROOF**

**VIBRATION PROOF**

“You can’t cross the sea merely by standing and staring at the water” - Rabindranath Tagore. This is why we stress our Marine products with severe vibration tests to simulate the worst offshore conditions, always ensuring full operability.



**DUST INTRUSION RESISTANT**

**DUST INTRUSION RESISTANT**

Dust intrusion is an important factor to handle in order to preserve the unique level of performance ensured by our Marine products for a long time. This is why they are totally protected against the intrusion of solid parts.



**HUMIDITY RESISTANT**

**HUMIDITY RESISTANT**

High humidity is the default condition that marine electronics and speakers have to face 99% of the time. To prevent any mechanical and electronic failure, Hertz Pure Marine Certified products are subjected to severe stress tests to take them to the limit.



**UV RESISTANT**

**UV RESISTANT**

According to the severe ASTM-D4329 standards for UV resistance, all the materials used for Hertz Marine products are designed to face long time exposition to UV radiations while cruising on the open sea.



**SALT FOG PROOF**

**SALT FOG PROOF**

To satisfy the standards required by ASTM-B117, Hertz Marine products are tested with massive salt fog spray to ensure a complete resistance to corrosion, typical of this atmospheric agent.



**THERMAL SHOCK RESISTANT**

**THERMAL SHOCK RESISTANT**

High quality ASA plastic and Polypropylene cones with co-molded Santoprene surround guarantee resistance to a wide range of temperatures.



**STAINLESS HARDWARE**

**STAINLESS HARDWARE**

Stainless hardware is unbeatable against rust and corrosion, preserving Hertz Marine speakers and electronics from degradation over time due to exposure to nature.



**CORROSION RESISTANT**

**CORROSION RESISTANT**

Electronics components corrosion caused by exposure in wet environments is totally neutralized by the use of dedicated marine-grade (epoxy coated) PCB boards.



**POWER**  
FOR THE **WAVES**  
**PURE MARINE**  
CERTIFIED PRODUCT

SOURCE UNITS



**200W**  
MOFSET POWER  
50 W X 4

# HMR 50

DIGITAL MEDIA RECEIVER

**ENGINEERED TO MAXIMIZE FUN ON-BOARD  
HMR 50 IS THE ULTIMATE SOLUTION FOR OPEN  
WATER ENTERTAINMENT**

**PURE MARINE DESIGN**

HMR 50 features IP66 protection grade, ASTM-D4329 standards for UV resistance and ASTM-B117 for salt fog operability, giving you unstoppable pleasure season after season.

<b>IP66</b>	<b>UV RESISTANT</b>	<b>WATER JET RESISTANT</b>	<b>SALT FOG PROOF</b>	<b>DUST INTRUSION RESISTANT</b>
-------------	---------------------	----------------------------	-----------------------	---------------------------------

**KEY FEATURES**

- 3.5" IPS DISPLAY** The large 3.5" full color TFT IPS display remains visible even during daytime navigation and the big buttons make it easy operating while cruising.
- PARTY MODE** Just push the dedicated button to play your source at the same volume in the whole vessel, transforming your boat into a dance floor.
- BATTERY VOLTAGE GAUGE** Voltage indicator to check-up battery status

- 3 ZONE** HMR 50 features 3 pairs of stereo outputs providing the ability to create 3 independently controlled listening areas (FLYBRIDGE, AFT DECK, CABIN) to obtain the perfect sound everywhere.
- MULTI COLOR** Multicolor backlight for a perfect match with cockpit lighting.
- 8 BAND EQ** The powerful 8 band digital equalizer will support you finding the best sound.





CONNECTIVITY


UNPARALLELED PERFORMANCE WITH ANY SOURCE

HMR 50 advanced connectivity includes DAB+ Ready™, SiriusXM-Ready™, Bluetooth APTX (CD Audio quality), USB 2.0 port (iPad/iPhone control) a to convert your deck in a real multimedia environment. The FM (RDS for EU)/AM PLL radio with Marine Weather Band completes the standard equipment.



**HMC D1** OPTIONAL REMOTE CONTROL  
HMC D1 allows to replicate every function of the main unit in every place of the boat you desire, maximizing the onboard comfort.



**HMC U1** OPTIONAL REMOTE CONTROL  
Play your favorite song and pump-up the volume while swimming in open water. Thanks to IPX7 certification you can install HMC U1 remote control freely anywhere on the boat, adding fun to every cruise.

**POWER**  
FOR THE **WAVES**  
**PURE MARINE**  
CERTIFIED PRODUCT

SOURCE UNITS



**200W**  
MOFSET POWER  
50 W X 4

# HMR 20

DIGITAL MEDIA RECEIVER

**DESIGNED TO WITHSTAND THE MOST EXTREME MARINE CONDITIONS, HMR 20 WILL BECOME YOUR TRUSTED FRIEND ON EVERY CRUISE**

HMR 20 turn every cruise into an exciting adventure bringing the music of your favorite artist to open water. The powerful (RDS)/AM PLL radio and the extended connectivity powered by DAB+ Ready, Bluetooth audio streaming and USB 2.0 port will liven up your trip with tons of musical contents.

### KEY FEATURES

- 3" IPS DISPLAY** The large 3" full color TFT IPS display remains visible even during daytime navigation and the big buttons make it easy operating while cruising.
- MULTI COLOR** Multicolor backlight for a perfect match with cockpit lighting.
- 5 PRESET EQ** Customize the sound with 5 EQ preset created by Hertz audio engineer.
- 2 ZONE** HMR 20 features 2 pairs of stereo outputs providing the ability to create 2 independently controlled listening areas.
- BATTERY VOLTAGE GAUGE** Voltage indicator to check-up battery status

### CONNECTIVITY

- USB 2.0
- AUX-IN
- AM/FM RADIO
- SUBWOOFER OUT
- DAB+ Digital Audio Broadcasting
- Bluetooth

### PURE MARINE DESIGN

- IP66
- UV RESISTANT
- WATER JET RESISTANT
- SALT FOG PROOF
- DUST INTRUSION RESISTANT



**HMC U1**  
OPTIONAL REMOTE CONTROL



**200W**  
MOFSET POWER  
50 W X 4

# HMR 10 D - HMR 10

DIGITAL MEDIA RECEIVER

## PERFECT SOUND ONBOARD WITH A GAUGE-STYLE INSTALLATION

With two pairs of high quality stereo outputs, a screen readable at all times and a generous marine-grade control panel, it will be a breeze to control your favorite playlist on USB or Bluetooth® streaming for maximum fun in water.

D option provides additional DAB + compatibility to listen to your favorite radio stations with unmatched audio quality.

### KEY FEATURES



Customize the sound with 3 EQ preset created by Hertz audio engineer.

### CONNECTIVITY



### PURE MARINE DESIGN



HMR 10 D



HMR 10



HMC U1  
OPTIONAL REMOTE CONTROL

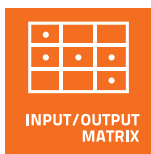
HERTZ

**DSP**  
marine

**FEEL THE MAGIC  
OF A CONCERT HALL  
ANYWHERE  
ON THE BOAT**



**Hertz marine dsp technology**  
allows you to move freely in  
the boat preserving a perfect  
surround effect.

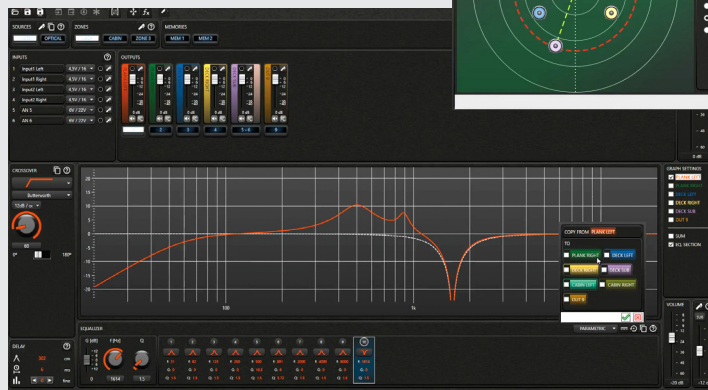
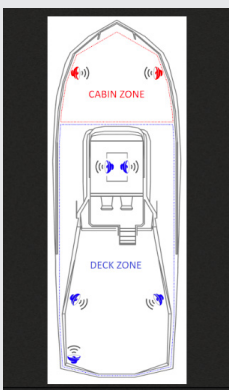


Hertz Marine DSP optimizes acoustic performance for each of the 3 configurable listening zones, regardless the speakers location and the passenger position, maximizing the listening experience.

Each speaker in the system can be fine-tuned with an equalization, a crossover filter and time delays to exploit its maximum potential.

PC SOFTWARE

Hertz Navigator software allow to create pre-optimized software setup files for a specific boat model and the related audio system installed, ensuring a correct acoustic result in a very short time.



**POWER**  
FOR THE **WAVES**  
**PURE MARINE**  
CERTIFIED PRODUCT

HIGH-POWER AMPLIFIERS

**12/24V**  
VERSION  
AVAILABLE

**DSP**  
marine



**130W x 8Ch**

D-CLASS  
MAX POWER

# HMD8 DSP

8 Ch MARINE AMPLIFIER WITH DSP

**ADC**  
ADVANCED D-CLASS

Thanks to the Hertz advanced D-CLASS output stage, HMD8 DSP joins maximum sound quality with unmatched efficiency to be very compact and easily installed anywhere in the boat.

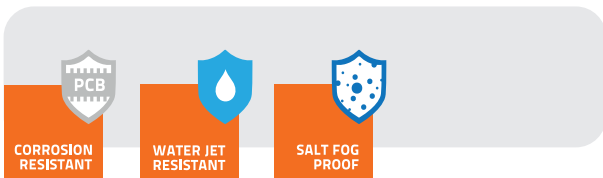


The HMD8 DSP, powered by Hertz Marine DSP technology, reach new heights of listening pleasure. DSP user friendly PC-Software interface makes the setup process a breeze, exploiting every single pills of performance from the installed speaker system. The amazing power of 8 x 85 W or 4 x 260 W (RMS@ 4Ω) gives the HMD8 DSP the capability to drive with authority the complete speaker system generating tons of crystal clear SPL up to 3 different zone of the vessel.

## HERTZ MARINE DSP TECHNOLOGY



## KEY FEATURES



12/24V  
VERSION  
AVAILABLE



1000W  
D-CLASS  
MAX POWER

# HMD1

HIGH POWER MONO AMPLIFIER



Hertz advanced D-CLASS output stage ensures pure listening pleasure while keeping a compact size with unmatched power efficiency.

HMD1 mono amplifier is the perfect solution to add one or more marine subwoofer to your vessel, being the ideal power extension of HMD8 DSP. At 1 Ohm it is stable and can supply up to 800 W of power with extremely compact dimension.

## KEY FEATURES

- HI POWER  
1 OHM  
STABLE
- DESIGNED FOR  
SUBWOOFER
- POWER FOR  
HMD8 DSP  
9th CH
- 3 INPUT  
LEVEL

“Power for the Waves” design philosophy features a sturdy enclosure made of extruded aluminum with an anti-corrosion treated PCB to ensure years of listening pleasure in open water.

- CORROSION  
RESISTANT
- WATER JET  
RESISTANT
- SALT FOG  
PROOF



# POWER FOR THE WAVES PURE MARINE CERTIFIED PRODUCT

HIGH-PERFORMANCE SPEAKERS



## HMX

HMX coaxials are engineered to operate in open water, pleasing you with the incomparable emotions of music for years on end: the specific ASA plastic grilles and polypropylene cone with comolded Santoprene surround provide UV resistance according to the severe ASTM-D4329 standards. The Aramid fiber spider with silicone-insulated lead wire ensures durability and constant performance over time.

Parts and assembly methods are designed to meet high-humidity marine environments (ASTM-B117 & IP65), ensuring the best audio performance season after season.

- Hertz **Pure Marine Certified Product** stamp featuring the IP65 protection grade, ASTM-D4329 standards for UV resistance and ASTM-B117 for salt fog operability.
- 1.4" Neodymium magnet tweeter featuring a PEI material dome combined with faceplate and acoustic lens optimized for best off-axis dispersion and highest SPL.
- Sound-transparent stainless-steel tweeter mesh grille providing efficient high frequency transfer, eye catching look and a rock-solid protection.
- Long-throw 25mm (1") voice coil woofer fine-tuned for infinite baffle applications.
- Sealed built-in crossover with resettable solid-state tweeter protection circuit.
- Gold-plated corrosion resistant terminals.

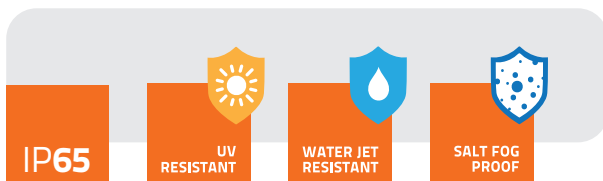
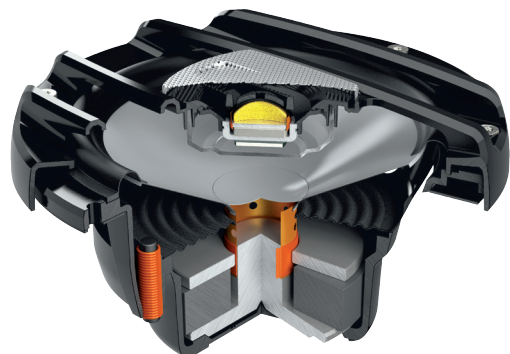
### LED LIGHTING OPTION

HMX coaxials are all available with RGB LEDs option (LD) featuring a lighting circuit integrated under the grille, protected by a Polypropylene transparent cover acting as light diffuser. Using the optional HM RGB 1 BK remote control you can change the LED color to suit your mood or craft, boosting your party to a different level!



**HM RGB 1 BK**  
Optional Rgb  
Remote Control

HM RGB 1 BK is composed by an RGB CONTROLLER specifically developed for LEDs option models including a radio frequency remote control with a wide array of functionalities ranging from the selection of the color better matching your boat/ATV/motorcycle to the creation of a lighting game reacting to music tempo.







**150W**  
POWER  
HANDLING

**HMX 6.5**  
6.5" Marine Coax White  
**HMX 6.5-LD**  
Rgb Leds 6.5" Marine  
Coax White



**150W**  
POWER  
HANDLING

**HMX 6.5-C**  
6.5" Marine Coax Black  
**HMX 6.5 LD-C**  
Rgb Leds 6.5" Marine  
Coax Black



**200W**  
POWER  
HANDLING

**HMX 8**  
8" Marine Coax White  
**HMX 8-LD**  
Rgb Leds 8" Marine  
Coax White



**200W**  
POWER  
HANDLING

**HMX 8-C**  
8" Marine Coax Black  
**HMX 8 LD-C**  
Rgb Leds 8" Marine  
Coax Black



**POWER**  
FOR THE **WAVES**  
**PURE MARINE**  
CERTIFIED PRODUCT

PREMIUM CLASS TOWERS



# HTX

Are you ready to enjoy your favorite track at high output level during your daily water ski session? Hertz Marine Towers, available with Clamp & Flat mounting options, developed for installations where compactness is required, will make your sport and leisure outings unforgettable, thanks to impressive audio performance and cool color lighting. Hertz Marine Tower are equipped with dedicated 8" coaxial speaker featuring a long-throw 32 mm (1.26") voice coil woofer with polypropylene cone injected with UV inhibitors and 1.4" Neodymium magnet tweeter, ensuring impressive audio performance.



Discover Adjustable logo



Discover Q-OS<sup>2</sup> Quick Orientation




Discover Q-OS<sup>2</sup> Quick Release




Enclosure and grilles are made of High-Impact & UV-resistant ASA polymer for the best durability under severe environmental conditions.

The solid 316-Stainless steel clamp mounting is ideal for Round or Square profile pipe applications where sound needs to be easily oriented and quickly released. This is possible thanks to Q-OS<sup>2</sup> (Quick Orientation & Release for Sound & Safety) patent pending technology.


**IP65**



**UV RESISTANT**



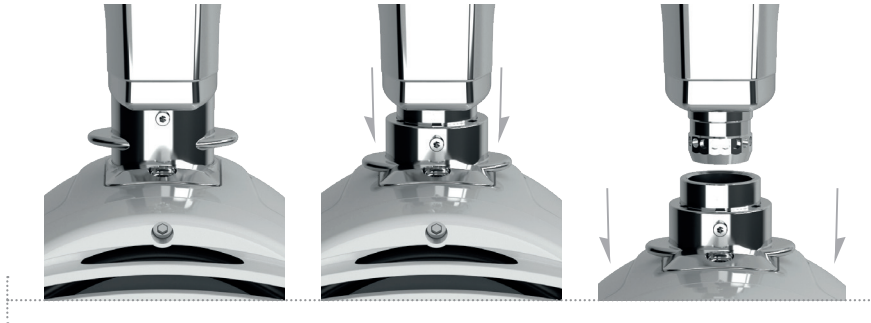
**WATER JET RESISTANT**



**SALT FOG PROOF**

### Q-OS<sup>2</sup> QUICK RELEASE TECHNOLOGY

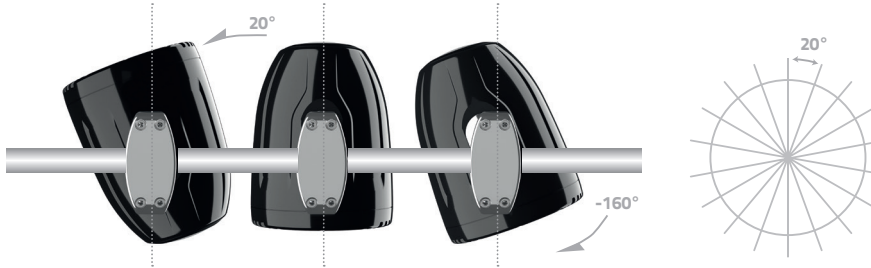
- Quick Mechanical/Electrical release for security/anti-theft and cleaning;
- Multi-pole high current connection self-contained into the clamp structure;
- Clamp structure includes rubber inserts for vibrations damping and fits both round roll-bar [38 mm, 76 mm (1-1/2" to 3")] and square roll-bar or roof mounting by detaching clamp basement upper part. Optional fitting accessories available for major OEM brands.



### Q-OS<sup>2</sup> QUICK ORIENTATION TECHNOLOGY

This innovative design encompasses all the requirements for tower clamping such as:

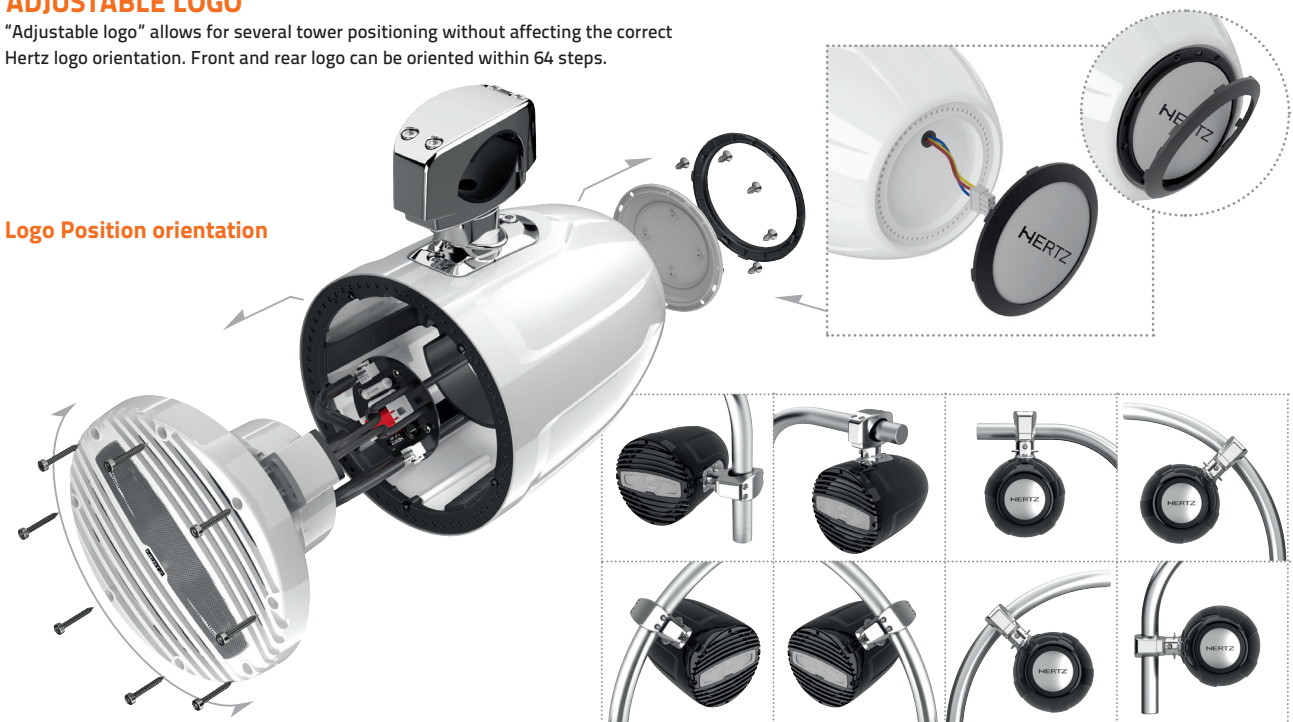
- Durability thanks to the solid 316 Stainless Steel construction;
- Tower can be quickly oriented within 18 steps (20° each) along horizontal axis for best sound projection and diffusion over the listening area;



### ADJUSTABLE LOGO

"Adjustable logo" allows for several tower positioning without affecting the correct Hertz logo orientation. Front and rear logo can be oriented within 64 steps.

#### Logo Position orientation



PREMIUM CLASS TOWERS



**200W** **HTX 8 M-CL-W**  
 Marine Tower Coax 8"  
 Clamp White  
**POWER HANDLING**



**200W** **HTX 8 M-CL-C**  
 Marine Tower Coax 8"  
 Clamp Black  
**POWER HANDLING**



**200W** **HTX 8 M-FL-W**  
 Marine Tower Coax 8"  
 Flat White  
**POWER HANDLING**



**200W** **HTX 8 M-FL-C**  
 Marine Tower Coax 8"  
 Flat Black  
**POWER HANDLING**



**HTX RGB W LOGO.1**  
 Optional Rgb Led Lighting Rear  
 Logo White



**HTX RGB C LOGO.1**  
 Optional Rgb Led Lighting Rear  
 Logo Black



**HM RGB 1 BK**  
 Optional Rgb  
 Remote Control

The optional rear Hertz led logo creates the same sophisticated atmosphere of front led, adding tons of class to your vessel.



**POWER**  
FOR THE **WAVES**  
**PURE MARINE**  
CERTIFIED PRODUCT

HIGH-PERFORMANCE SPEAKERS

**HERTZ**



## HMX SPORT STYLE

Give your boat a more aggressive look with HMX sport style. Thanks to the combination of the open-sight cone and RGB LED option, it will be easy to create an impressive atmosphere for your boat party, ensuring an unforgettable time for your guests.



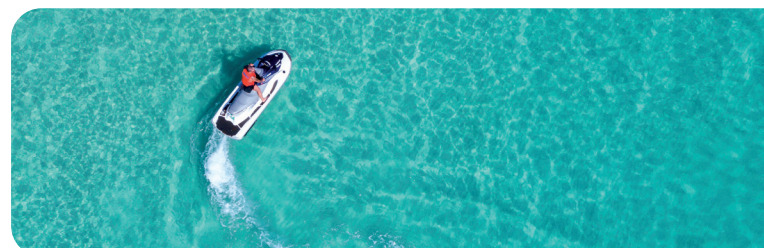
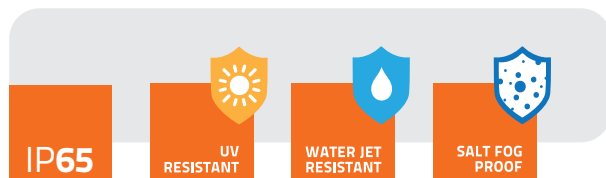
**HM RGB 1 BK**  
Optional Rgb  
Remote Control



**200W**  
**POWER HANDLING**  
**HMX 8 S**  
8" Marine Coax Sport  
**HMX 8 S-LD**  
Rgb Leds 8" Marine Coax Sport



**150W**  
**POWER HANDLING**  
**HMX 6.5 S**  
6.5" Marine Coax Sport  
**HMX 6.5 S-LD**  
Rgb Leds 6.5" Marine Coax Sport



**POWER**  
FOR THE **WAVES**  
**PURE MARINE**  
CERTIFIED PRODUCT

COAXIAL SPEAKERS



SPORT

## HEX

PREMIUM QUALITY AND COOL STYLING,  
THIS IS HEX LINE

Available with 3 option grilles, **SPORT**, **MARINE** and **CLASSIC**, HEX coaxial always provide the perfect style for your boat, giving you years of pure fun while cruising, being over engineered and tested for Marine applications.

The compact 6.5" speaker, with a depth of only 2.36 in. delivers a detailed and dynamic sound, making every outing memorable.



MARINE

CLASSIC



**PAINTABLE SPORT GRILLE**

HEX sport grille can be easily removed to be painted with a custom color perfect for your boat.

*This picture shows some examples of custom color combinations.*



**LED LIGHTING**

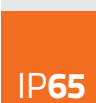



The built-in leds create a unique feeling on board to give the right atmosphere to your venues.



**HM RGB 1 BK**

Optional Rgb Remote Control



 <p>IP65</p>	 <p>UV RESISTANT</p>	 <p>WATER JET RESISTANT</p>	 <p>SALT FOG PROOF</p>
---	---	--	---



**100W** **HEX 6.5 M-W**  
6.5" Marine Coax White  
**POWER HANDLING**



**100W** **HEX 6.5 M-C**  
6.5" Marine Coax Black  
**POWER HANDLING**



**100W** **HEX 6.5 C-W**  
6.5" Marine Coax Classic  
**POWER HANDLING**



**100W** **HEX 6.5 S-LD-G**  
6.5" Marine Coax Sport  
**POWER HANDLING**

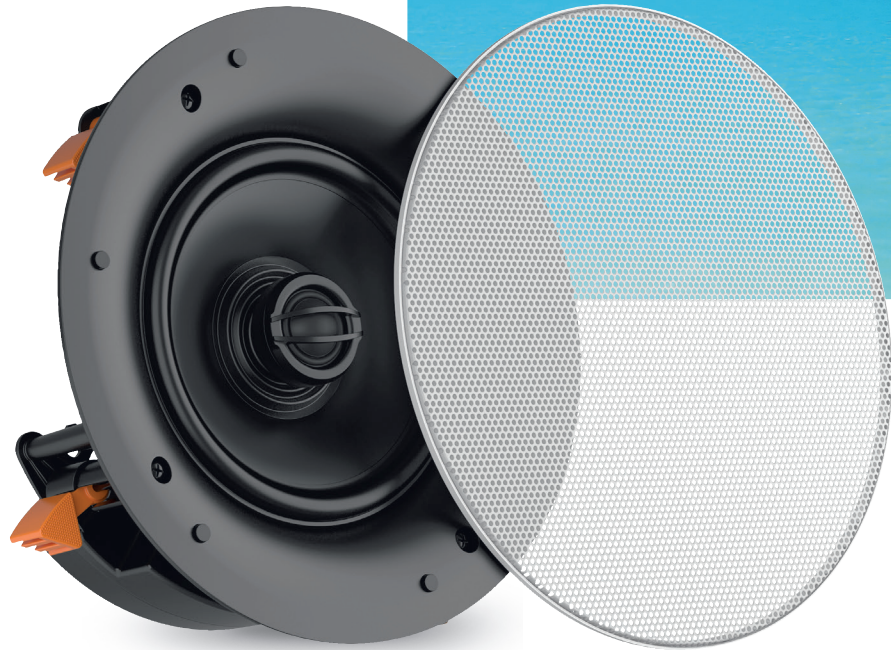


- Hertz **Pure Marine Certified Product** stamp featuring the IP65 protection grade, ASTM-D4329 standards for UV resistance and ASTM-B117 for salt fog operability.
- Edgeless mesh grille with magnetic locking system designed to disappear from view.
- Sealed crossover filter made by marine-grade coded PCB to prevent corrosion against salt fog.
- Dedicated crossover designed to optimize sound emission for in-wall install.
- High efficiency tweeter designed with FEM simulation to maximize sound projection for in-wall and in-ceiling installation.
- Woofer with 25 mm (1") voice coil and 6 Ω impedance, optimized for any amplifiers system.
- Silicone insulated lead wires for extended durability in outdoor application.
- Fast and easy installation thanks to the robust hooking system.



**POWER**  
FOR THE **WAVES**  
**PURE MARINE**  
CERTIFIED PRODUCT

COAXIAL SPEAKERS



**100W**  
POWER  
HANDLING

**HEX 6.5 IC-W**  
6.5" Marine Coax  
In-Ceiling




## HEX IN-CEILING


Hertz marine In-Ceiling speaker is designed to deliver thrilling sound with a near stealth installation. Engineered to be incredibly durable, they are fine-tuned for in-wall positioning providing top audio performance from very discreet designs. This includes an advanced crossover built with marine conformal coated PCB encapsulated in a sealed enclosure to prevent corrosion.

- Hertz **Pure Marine Certified Product** stamp featuring the IP65 protection grade, ASTM-D4329 standards for UV resistance and ASTM-B117 for salt fog operability.
- Edgeless mesh grille with magnetic locking system designed to disappear from view.
- Sealed crossover filter made by marine-grade coded PCB to prevent corrosion against salt fog.
- Dedicated crossover designed to optimize sound emission for in-wall install.
- High efficiency tweeter designed with FEM simulation to maximize sound projection for in-wall and in-ceiling installation.
- Woofer with 25 mm (1") voice coil and 6 Ω impedance, optimized for any amplifiers system.
- Silicone insulated lead wires for extended durability in outdoor application.
- Fast and easy installation thanks to the robust hooking system.


**IP65**



**UV  
RESISTANT**



**WATER JET  
RESISTANT**



**SALT FOG  
PROOF**



**POWER**  
FOR THE **WAVES**  
**PURE MARINE**  
CERTIFIED PRODUCT

HIGH-PERFORMANCE SUBWOOFERS



## HMS

HERTZ MARINE SUBWOOFERS  
WILL BRING YOUR PARTY TO  
THE NEXT LEVEL!

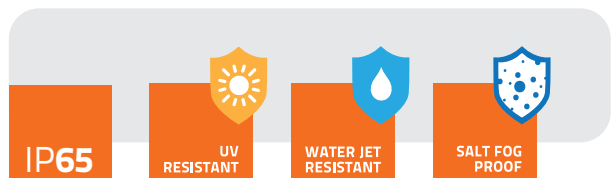
Available with sport or marine grille option, HMS subwoofers are designed to be installed without the need for a dedicated enclosure delivering powerful and precise bass in any vessel.

Sport grille, featuring built-in leds, can be easily removed to be painted with the perfect color for your vessel.



The motor and suspension design are optimized for high-power, infinite-baffle operation featuring long linear excursion capability for tremendous output with low-distortion.

Hertz Marine subwoofers not only add tons of bass output to your system but also relieve the main speakers from the hard work of reproducing the lowest frequency range, maximizing the overall system performance, **for unlimited sound pressure and emotion!**





**500W**  
POWER  
HANDLING

**HMS 10 B**  
10" Marine Subwoofer White  
**HMS 10 B-2**  
2 Ω 10" Marine Subwoofer White



**500W**  
POWER  
HANDLING

**HMS 10 B-C**  
10" Marine Subwoofer Black  
**HMS 10 B-C2**  
2 Ω 10" Marine Subwoofer Black



**500W**  
POWER  
HANDLING

**HMS 10 S-LD-G**  
10" Marine Subwoofer  
**HMS 10 S2-LD-G**  
2 Ω 10" Marine Subwoofer



- Hertz **Pure Marine Certified Product** stamp featuring the IP65 protection grade, ASTM-D4329 standards for UV resistance and ASTM-B117 for salt fog operability.
- Long-throw 50 mm (2") voice coil woofer engineered for infinite baffle application featuring polypropylene cone injected with UV inhibitors and co-molded Santoprene surround.
- Progressive-design aramid fiber spider with silicone-insulated lead wires ensuring durability and constant performance over time.
- High-excursion mobile equipment driven by a massive magnetic group encapsulated into a marine-grade polymer injected basket.
- Gold-plated corrosion resistant brass connection terminals with silicone cap protecting lead wire junction point.

# POWER FOR THE WAVES PURE MARINE CERTIFIED PRODUCT

HIGH-POWER AMPLIFIERS



**1500W**  
D-CLASS  
MAX POWER

**HCP 5 MD**  
Five Channels Marine  
Amplifier  
**HCP 5 MD 24V**  
24V Five Channels  
Marine Amplifier

## HCP M

With a compact design featuring conformal coated PCB, HCP M series are ready to face the open water environment, providing tons of clean power. The heat sink has been crafted from extruded aluminium, a material unmatched for lightness, robustness and heat dissipation. To keep size to a minimum, the power transistors are placed between the PCB and the top side of the heat sink where heat is gathered. Built up heat is then directed to the special dissipation "wings" along the side of the amplifier. The complete crossover filters with variable frequency and the bridge operation mode improve application versatility for the design of ultimate active systems in your vessel.

- Hertz **Pure Marine Certified Product** stamp featuring the IP64 protection grade, ASTM-D4329 standards for UV resistance and ASTM-B117 for salt fog operability.
- Compact design built from extruded aluminum heatsink with top side ensuring effective heat transfer.
- Power supply featuring multiple winding transformer, Low-ESR 105°C capacitors, 2 Ω stable output stage.
- Complete crossover filters providing a greater application versatility for the design of active systems.
- Bridge operation mode to drive a subwoofer or to create a powerful dual-mono system.
- Bass Boost adjustable via selector, for more punch from speakers.
- Special balanced input circuitry to reject electro-magnetic disturbances.
- Hi-Level and lo-level inputs to be compatible with any source.
- Short-circuit and thermal protections with auto resetting.



**HRC**  
Hertz Remote Control  
Optional for  
HCP 5MD / HCP 5MD 24V



**800W**  
AB-CLASS  
MAX POWER

**HCP 2MX**  
Two Channels  
Marine Amplifier



**760W**  
AB-CLASS  
MAX POWER

**HCP 4M**  
Four Channels  
Marine Amplifier

<b>HI POWER</b> 2 OHM STABLE	<b>PCB</b> CORROSION RESISTANT	<b>WATER JET</b> RESISTANT	<b>SALT FOG</b> PROOF
------------------------------------	--------------------------------------	-------------------------------	--------------------------

# POWER FOR THE WAVES PURE MARINE CERTIFIED PRODUCT

HIGH-POWER AMPLIFIERS

HERTZ



**600W**  
D-CLASS  
MAX POWER

**HMP 4D**  
Four Channels Marine  
Amplifier

## HMP

The compact HMP amplifiers with a cast-aluminium IP64 chassis, are the ideal choice for adding multi-zone audio to your boat. Class-D technology maximizes efficiency ensuring an incredible power to size ratio and low battery drain. The complete integrated crossover and the bridge operation mode improve versatility to satisfy every installation need.

- Hertz **Pure Marine Certified Product** stamp featuring the IP64 protection grade, ASTM-D4329 standards for UV resistance and ASTM-B117 for salt fog operability.
- HRC BM (Hertz Remote Control Bass Management) included.
- Bass Boost adjustable via selector, for more punch from speakers.
- Complete crossover filters allowing for easy setup and system flexibility.
- Hi-Level and lo-level inputs to be compatible with any source.
- Special balanced input circuitry to reject electro-magnetic disturbances.
- Short-circuit and thermal protections with auto resetting.






**HRC BM**  
Hertz Remote Control Bass  
Management  
Included for HMP 1D



**600W**  
D-CLASS  
MAX POWER

**HMP 1D**  
Mono Marine  
Amplifier

<b>HI POWER</b> 2 OHM STABLE	<b>IP64</b>	 CORROSION RESISTANT	 WATER JET RESISTANT	 SALT FOG PROOF
------------------------------------	-------------	---	---	--



# HERTZ MARINE ACCESSORIES



## HMC D1 REMOTE CONTROL

HMCD1 provides the ability to replicate every function of the HMR 50 main unit, creating up to 3 independently controlled listening areas.  
Optional for HMR 50



## HMC U1 REMOTE CONTROL

Play your favorite song and pump-up the volume while swimming in open water. Thanks to IPX7 certification you can install HMC U1 remote control anywhere on the boat.  
Optional for HMR 50, HMR 20, HMR 10 D, HMR 10



## HMB DAB+

This module add DAB+ DIGITAL RADIO capability to Hertz Marine Source.  
Provided with dedicated antenna.  
Optional for HMR 50, HMR 20



## HM RGB 1 BK WIRELESS RGB REMOTE CONTROL

HM RGB 1 BK includes an RGB CONTROLLER specifically developed for LEDs option models and a radio frequency remote control with a wide array of functionalities ranging from color selection to the tempo lighting games activation.  
Optional for speakers with RGB leds option (LD)



## HMA USB AUX IN

Extension cable water proof 2 mt.  
Optional for HMR 50, HMR 20, HMR 10 D, HMR 10



## HMA C1306

13 pin remote controller extension cable 6 mt.  
Optional for HMR 50



## HMA C13Y

13 pin y cable.  
Optional for HMR 50



## HMA C3.5

3.5 jack extension cable 10 mt.  
Optional for HMR 50, HMR 20, HMR 10 D, HMR 10



## HMA C3.5Y

3.5 jack y cable.  
Optional for HMR 50, HMR 20, HMR 10 D, HMR 10

## MARINE GRADE SOURCE UNITS



SPECIFICATIONS	HMR 50	HMR 20	HMR 10 - HMR 10 D
<b>DISPLAY</b>	3.5" COLOR TFT IPS	3" COLOR TFT IPS	2.8" DOT Matrix display
<b>PEAK POWER @ 4 Ω</b>	4 x 50 W	4 x 50 W	4 x 50 W
<b>FRONT PANEL IPX RATING</b>	IP66	IP66	IP66
<b>MULTI-ZONE</b>	3	2	-
<b>LINE OUT</b>	3 (1 x L + R per zone)	2 (1 x L + R per zone)	2 (F + R)
<b>SUBWOOFER OUT</b>	1 (Low Pass 60-80-100 Hz)	1 (Low Pass 60-80-100 Hz)	-
<b>AUX INPUT</b>	1 x L + R	1 x L + R	1 x L + R
<b>EQUALIZER</b>	CUSTOM 8 BANDS	BASS-TREBLE	BASS-TREBLE
<b>EQ. PRESET</b>	5	5	3
<b>CAMERA IN</b>	Yes	-	-
<b>BATTERY VOLTAGE GAUGE</b>	Yes	Yes	-
<b>SOURCES</b>			
<b>TUNER</b>	AM/FM with RDS (where available)	AM/FM with RDS (where available)	AM/FM – Only HMR 10D with RDS (where available)
<b>USB</b>	Yes	Yes	Yes
<b>IPOD/IPHONE</b>	Yes	-	-
<b>DAB+ READY</b>	Yes	Yes	Only HMR 10 D
<b>SIRIUSXM READY</b>	Yes	-	-
<b>BLUETOOTH</b>	5.0	5.0	2.1
	Audio streaming with ID3 Tag Display APT-X (CD AUDIO QUALITY)	Audio streaming with ID3 Tag Display -	Audio streaming -
<b>SIZE &amp; MOUNTING</b>			
<b>Unit Size mm (in.)</b>	W 146 (5.748) x H 105 (4.134) x D 121 (4.763)	W 146 (5.748) x H 105 (4.134) x D 121 (4.763)	Diameter 113 (4.45)
<b>Mounting Hole size mm (in.)</b>	W 122 (4.8) x H 52 (2.05)	W 122 (4.8) x H 52 (2.05)	W 92 (3.62) x H 70 (2.75)
<b>Mounting Depth mm (in.)</b>	99 (3.89)	99 (3.89)	70 (2.75)
<b>Mounting Method</b>	Screw	Screws	U-Bracket



## TECHNICAL SPECIFICATIONS

### HIGH-PERFORMANCE SPEAKERS

#### HMX SERIES



HMX 6.5 (C/LD/S)



HMX 8 (C/LD/S)

COAX specifications			
Size mm (in.)	Woofers	165 (6.5)	200 (8)
	Tweeter	36 (1.4)	36 (1.4)
	Mounting	69 (2.72)	91 (3.58)
Power Hand. W	Peak	150	200
	Cont.	75	100
Imp.Ω		4	4
Freq. Resp.Hz		50 - 25 K	45 - 25 K
Sens. dB/SPL		89	91
Magnet WF/TW		High density flux ferrite / Neodymium	High density flux ferrite / Neodymium
Woofers Cone / Tweeter Dome		Polypropylene / PEI	Polypropylene / PEI

#### HEX SERIES



HEX 6.5 (M-C/M-W/S)



HEX 6.5 (CL-W/IC-W)

COAX specifications			
Size mm (in.)	Woofers	165 (6.5)	165 (6.5)
	Tweeter	24 (0.9)	24 (0.9)
	Mounting	61,7 (2.43)	61,5 (2.42)
Power Hand. W	Peak	100	100
	Cont.	50	50
Imp.Ω		4	4 (6 IC-W only)
Freq. Resp.Hz		50 - 23 K	50 - 23 K
Sens. dB/SPL		88	88
Magnet WF/TW		High density flux ferrite / Neodymium	High density flux ferrite / Neodymium
Woofers Cone / Tweeter Dome		Polypropylene / PEI	Polypropylene / PEI

### PREMIUM CLASS TOWER

#### HTX SERIES



HTX 8 M-CL-C/W



HTX 8 M-FL-W/C

COAX specifications			
Size mm (in.)	Woofers	200 (8)	200 (8)
	Tweeter	36 (1.4)	36 (1.4)
	Min. Mounting Height clamp/flat	325 (12.8) / 237 (9.3)	325 (12.8) / 237 (9.3)
Power Hand. W	Peak	200	200
	Cont.	100	100
Imp.Ω		4	4
Freq. Resp.Hz		45 - 25 K	45 - 25 K
Sens. dB/SPL		91	91
Magnet WF/TW		High density flux ferrite / Neodymium	High density flux ferrite / Neodymium
Woofers Cone / Tweeter Dome		Polypropylene with UV inhibitors / PEI	Polypropylene with UV inhibitors / PEI

### MARINE SUBWOOFERS

#### HMS SERIES



HMS 10 B/B-C



HMS 10 S

SUB specifications		
Size mm (in.)		250 (10)
Mounting		145 (5.71)
Power Hand. W	Peak	500
	Cont. program	250
Imp.Ω		4 (2 C2/S2)
Sens. dB/SPL		88 (88,5 C2)
Application		Infinite baffle
Magnet		High density flux ferrite
Cone		Polypropylene with UV inhibitors



## HIGH-POWER AMPLIFIERS



**HMD8 DSP - HMD8 DSP 24V**

**AMP specifications**

<b>Channel Mode</b>			8 - 4
<b>Output Power (RMS) @ 14.4 VDC</b>	@ 4Ω	W x ch	85 x 8
	@ 2Ω	W x ch	130 x 8
	@ 4Ω	W x ch (4 ch)	260 x 4
<b>Distortion - THD</b>	1 kHz @ 4Ω, 2 VRMS	%	0,06
<b>S/N Ratio</b>	Sensitivity @ 1 V RMS	dBA	105
<b>Damping factor</b>	1 kHz @ 4Ω		110
<b>Size W x D x H</b>	mm		243 x 48 x 159
	in.		9.56 x 1.89 x 6.2

**DSP specifications**

<b>Filter type</b>	Full / Hi pass / Low Pass / Band Pass
<b>Filter mode and slope (dB/oct)</b>	Butterworth (6, 12, 18, 24, 30, 36, 42, 48, 54, 60)
	Linkwitz-Riley (12, 24, 36, 48, 60 dB/oct)
	Bessel (6, 12, 18, 24, 30, 36, 42, 48, 54, 60)
	Chebyshev (6, 12, 18, 24, 30, 36, 42, 48, 54, 60)
	QLP quasi-linear phase (6, 12)
<b>Crossover frequency Hz</b>	20 ÷ 20k integer values
<b>Phase control</b>	0° / 180°, all pass equalizer poles
<b>Graphic and Parameter</b>	n. 10 parametric poles (Peaking, High Shelf, Low Shelf, Notch, All pass) ±12 dB gain, variable Q (0.5 – 16.0)
<b>Equalizer</b>	0 ÷ 510 cm / 0 ÷ 200.8 in.
<b>Time Alignment Distance</b>	0 ÷ 15 ms
<b>Time Alignment Delay</b>	1cm / 0.39 in.
<b>Time Alignment Step</b>	1 sample
<b>Time Alignment Fine SET</b>	n. 2 memories
<b>Memories</b>	n. 3 parametric poles for each memory (Peaking, High Shelf, Low Shelf) ±12 dB gain, variable Q (0.5 – 16.0)
<b>Preset (Drive Preset)</b>	Rotary switch for 7 installation Presets



**HMD1 - HMD1 24V**

**AMP specifications**

<b>Channel Mode</b>			1
<b>Output Power (RMS) @ 14.4 VDC</b>	@ 4Ω	W x ch	500
	@ 2Ω	W x ch	800
<b>Distortion - THD</b>	1 kHz @ 4Ω, 2 VRMS	%	0.1%
<b>S/N Ratio</b>	Sensitivity @ 1 V RMS	dBA	101
<b>Damping factor</b>	1 kHz @ 4Ω		120
<b>Size W x D x H</b>	mm		243 x 48 x 159
	in.		9.56 x 1.89 x 6.2

## HIGH-POWER AMPLIFIERS



### HCP M SERIES

AMP specifications			HCP 2MX	HCP 4M	HCP 5MD - HCP 5MD 24 V
<b>Channel Mode</b>			2 - 1	4 - 3 - 2	5 - 3
<b>Output Power (RMS) @ 14.4 VDC</b>	@ 4Ω	W x ch	120 x 2	65 x 4	65 x 4 + 200 x 1
	@ 2Ω	W x ch	200 x 2	95 x 4	105 x 4 + 330 x 1
	@ 4Ω	W x ch (3 ch)	-	65 x 2 + 190 x 1	210 x 2 + 200 x 1
	@ 2Ω + 4Ω	W x ch (3 ch)	-	95 x 2 + 190 x 1	-
	@ 4Ω + 2Ω	W x ch (3 ch)	-	-	210 x 2 + 330 x 1
	@ 4Ω	W x ch (2 ch)	-	190 x 2	-
	@ 4Ω	W x ch (mono)	400 x 1	-	-
<b>Filters</b>	Bypass		Yes	Yes	Yes
	Hi-Pass	Hz @ dB/Oct.	50 ÷ 3,2k @ 12	A/B: 80 @ 12	A: 50 ÷ 5k @ 12 B: 50 ÷ 5k @ 12
	Band-Pass	Hz @ dB/Oct.	-	-	B: 50 ÷ 500 @ 12 B: 50 ÷ 5k @ 12
	Lo-Pass	Hz @ dB/Oct.	50 ÷ 3,2k @ 12	A/B: 50 ÷ 500 @ 12	C: 50 ÷ 500 @ 24
<b>Boost</b>	dB	gain @ 50 Hz	off / +3 / +6 dB	off / +6 / +12 dB	0 ÷ 12 dB
<b>HRC (Hertz Remote Control)</b>		(-50 ÷ 6) dB	-	-	Optional
<b>Pre-Out</b>	Bypass		Yes	Yes	No
	Hi-Pass		50 ÷ 3,2k @ 12	-	-
	Lo-Pass		50 ÷ 3,2k @ 12	-	-
<b>Distortion - THD</b>	100 Hz @ 4Ω	%	0,03	0,01	0,02
<b>S/N Ratio</b>	Sensitivity @ 1 V RMS	dBA	105	103	100
<b>Damping factor</b>	100 Hz @ 4Ω		300	120	A/B: 100 - C: 250
<b>Size W x D x H</b>		mm	315 x 190 x 50	315 x 190 x 50	345 x 190 x 50
		in.	12.40 x 7.48 x 1.97	12.40 x 7.48 x 1.97	13.58 x 7.48 x 1.97



### HMP SERIES

AMP specifications			HMP 1D	HMP 4D
<b>Channel Mode</b>			1	4 - 3 - 2
<b>Output Power (RMS) @ 14.4 VDC</b>	@ 4Ω	W x ch	180 x 1	60 x 4
	@ 2Ω	W x ch	300 x 1	75 x 4
	@ 4Ω	W x ch	-	60 x 2 + 150 x 1 (4Ω)
	@ 2Ω	W x ch	-	75 x 2 + 150 x 1 (4Ω)
	@ 4Ω	W x ch (2 ch)	-	150 x 2
<b>Filters</b>	Bypass		yes	yes
	Hi-Pass	Hz @ dB/Oct.	-	65 / 85 / 115 @ 12
	Lo-Pass	Hz @ dB/Oct.	65 / 85 / 115 @ 12	65 / 85 / 115 @ 12
<b>Subsonic</b>	Hi-Pass	Hz @ dB/Oct.	off / 22 / 32 @ 12	-
<b>Boost</b>	dB	gain @ 45 Hz	off / +6 / +9 dB	-
<b>HRC BM (Hertz Remote Control Bass Management)</b>		(-50 ÷ 6) dB	Included	-
<b>Distortion - THD</b>	100 Hz @ 4Ω	%	0,1	0,2
<b>S/N Ratio</b>	Sensitivity @ 1 V RMS	dBA	105	95
<b>Damping factor</b>	1 kHz @ 4Ω		300	45
<b>Size W x D x H</b>		mm	223 x 100.5 x 43.6	223 x 100.5 x 43.6
		in.	8.77 x 3.95 x 1.71	8.77 x 3.95 x 1.71

**POWER**  
FOR THE **WAVES**  
**PURE MARINE**  
CERTIFIED PRODUCT

**HERTZ**

90131176





## 2021

YOUR LOCAL HERTZ RETAILER IS:



[www.hertzaudiovideo.com](http://www.hertzaudiovideo.com)

The images contained herein are courtesy of boat manufacturers who install Hertz Marine products.

The Bluetooth® word mark and logos are registered trademarks owned by Bluetooth SIG, Inc. and any use of such marks by Elettromedia srl is under license.

Sirius, XM and all related marks and logos are trademarks of Sirius XM Radio Inc. All rights Reserved.

All other trademarks are the property of their respective owners.

